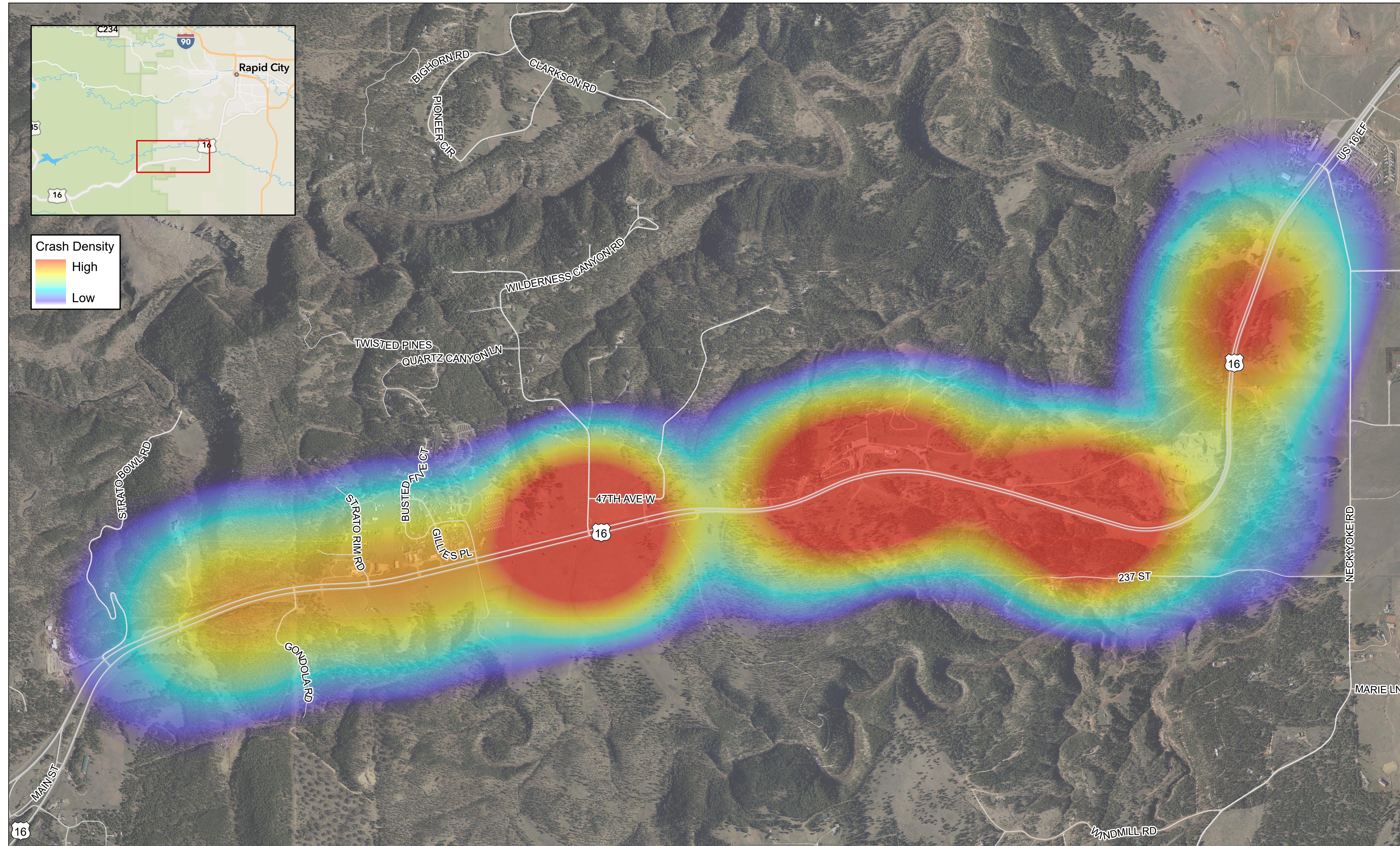


CRASH DENSITY (2018-2022)

U.S. HIGHWAY 16 CORRIDOR STUDY: RURAL SUB-AREA ANALYSIS

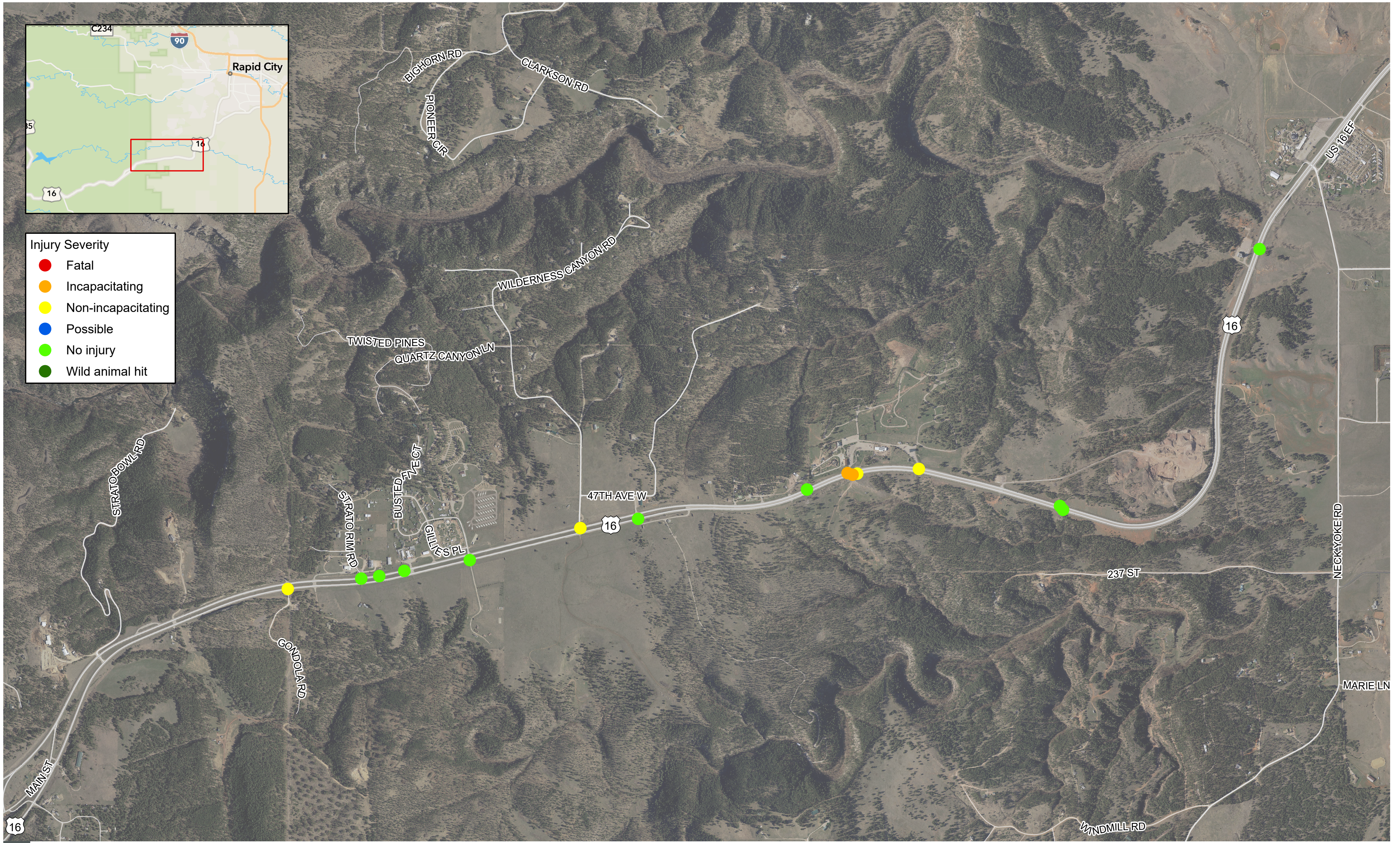


Crash density excludes vehicle-animal crashes

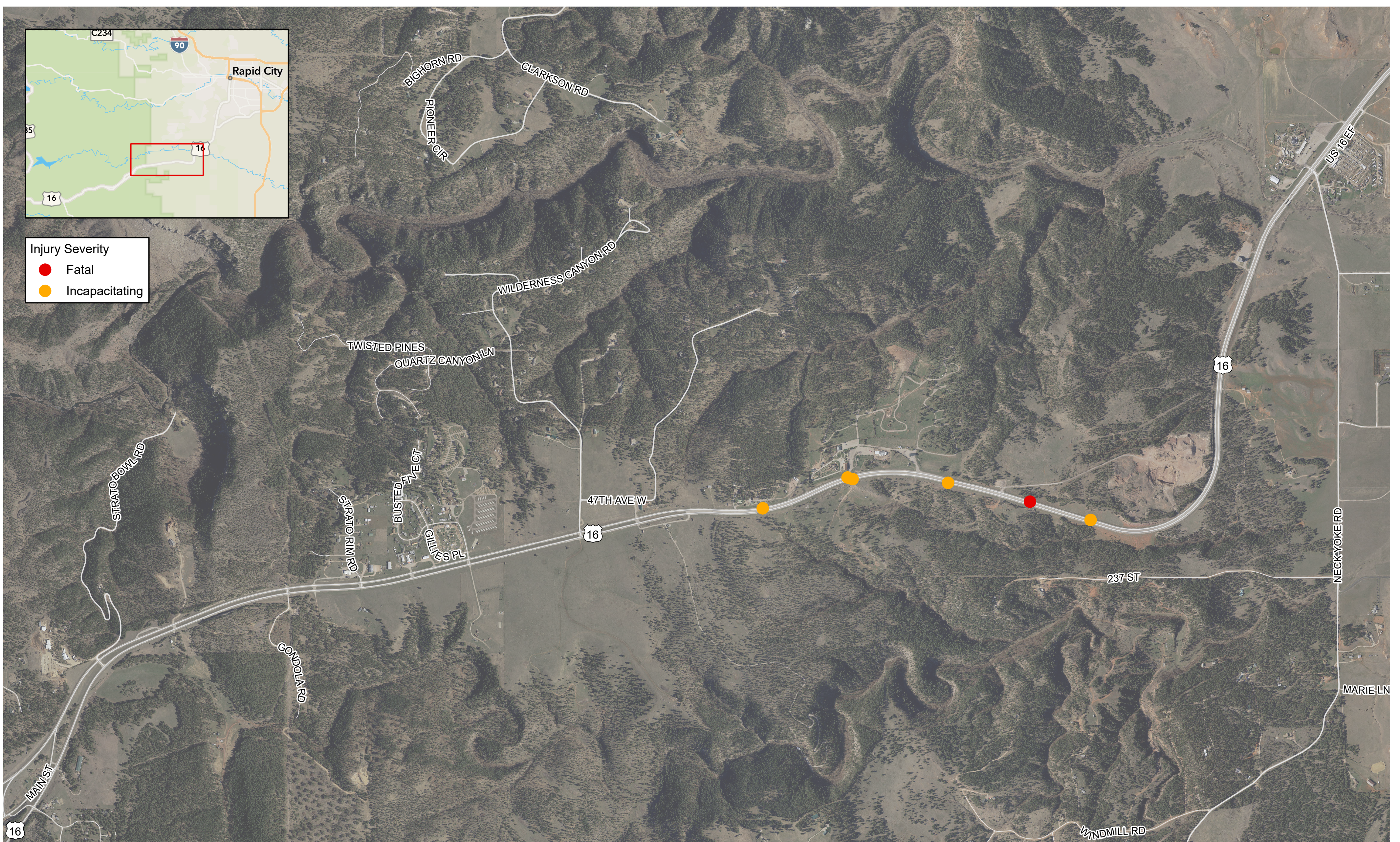
CRASH HISTORY (2018-2022)

U.S. HIGHWAY 16 CORRIDOR STUDY: RURAL SUB-AREA ANALYSIS

ANGLE CRASHES (2018-2022)

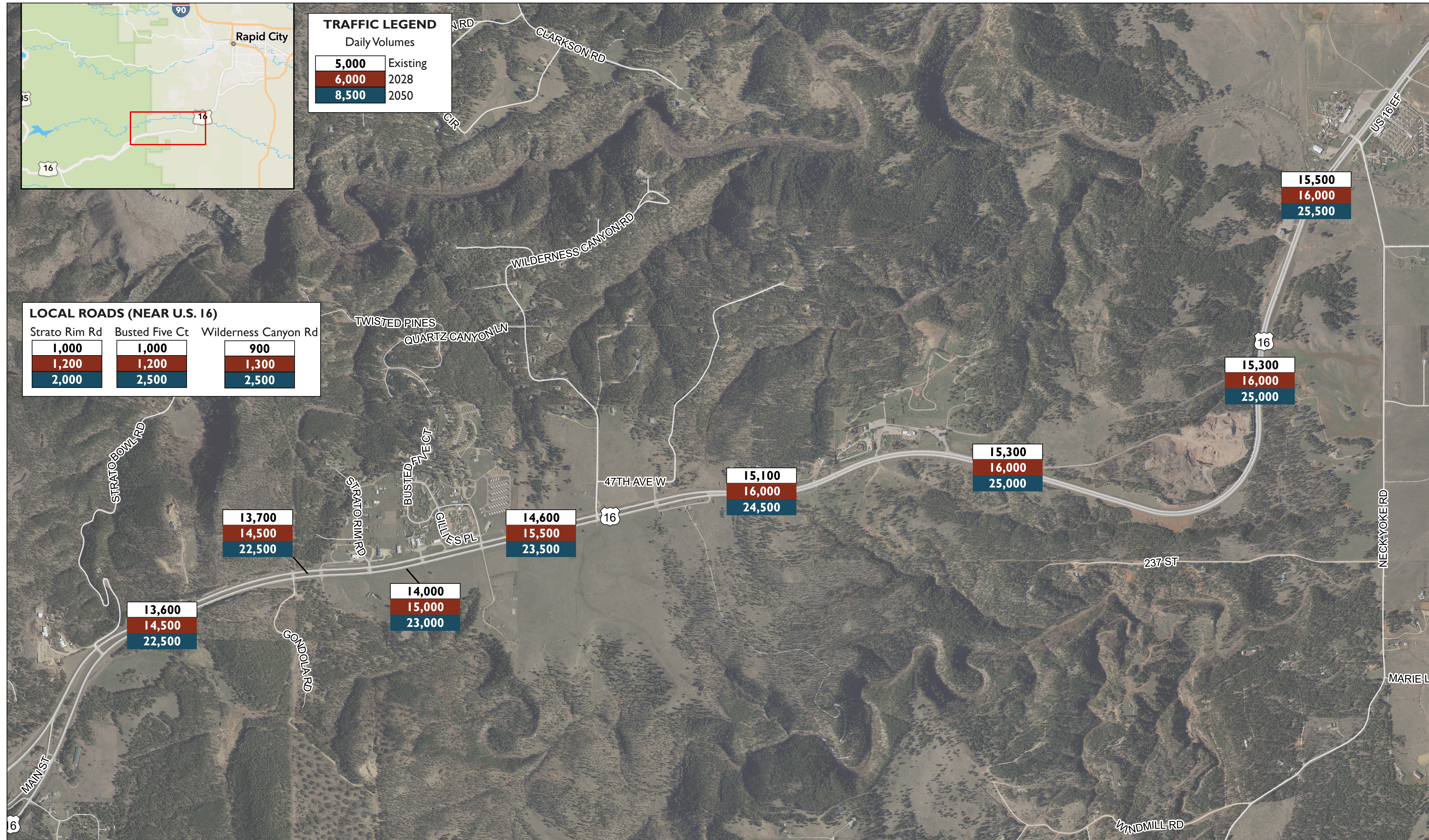


SEVERE INJURY CRASH HISTORY (2018-2022)



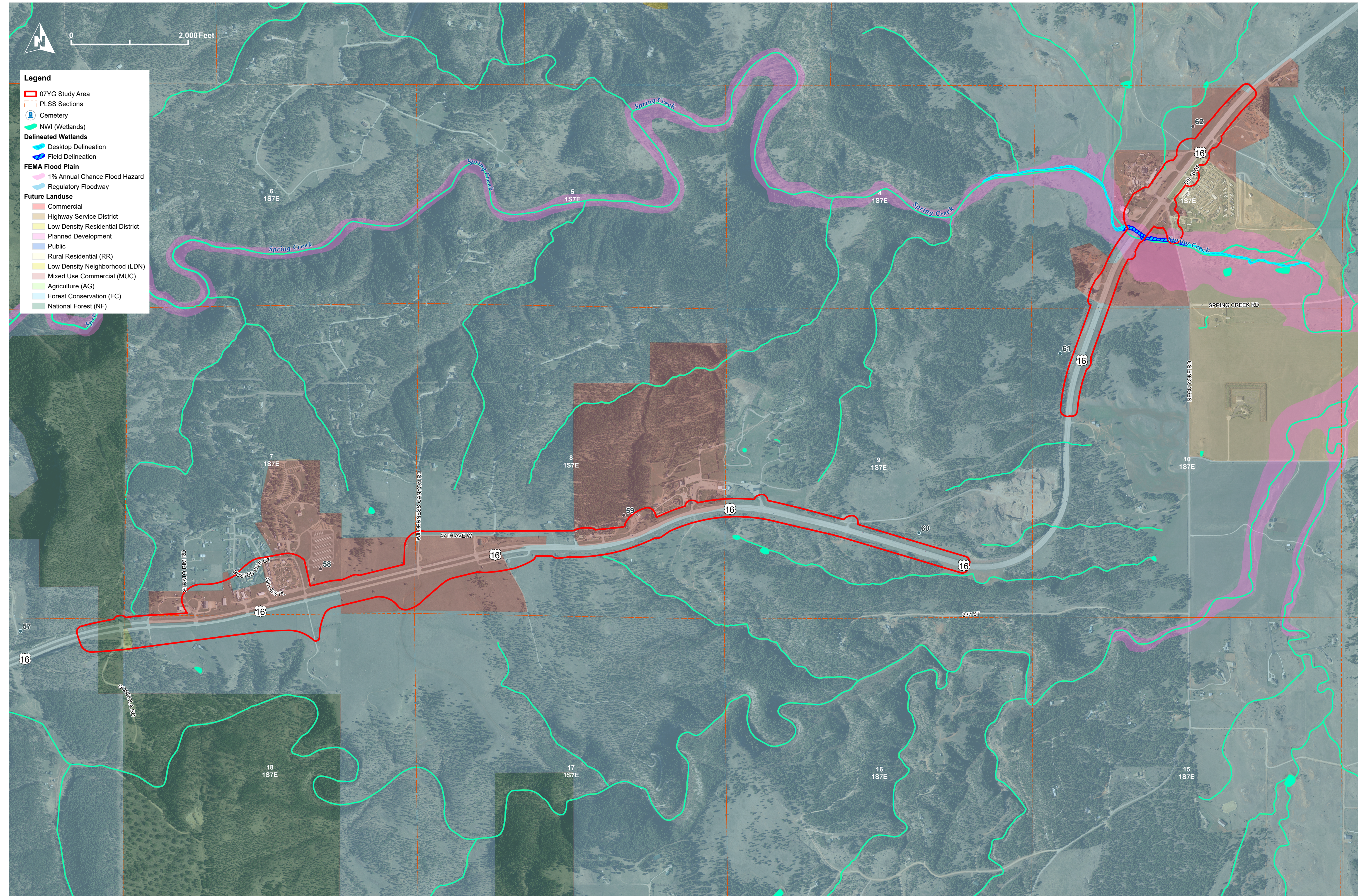
DAILY TRAFFIC FORECASTS

U.S. HIGHWAY 16 CORRIDOR STUDY: RURAL SUB-AREA ANALYSIS



DRAFT PURPOSE AND NEED

U.S. HIGHWAY 16 CORRIDOR STUDY: RURAL SUB-AREA ANALYSIS



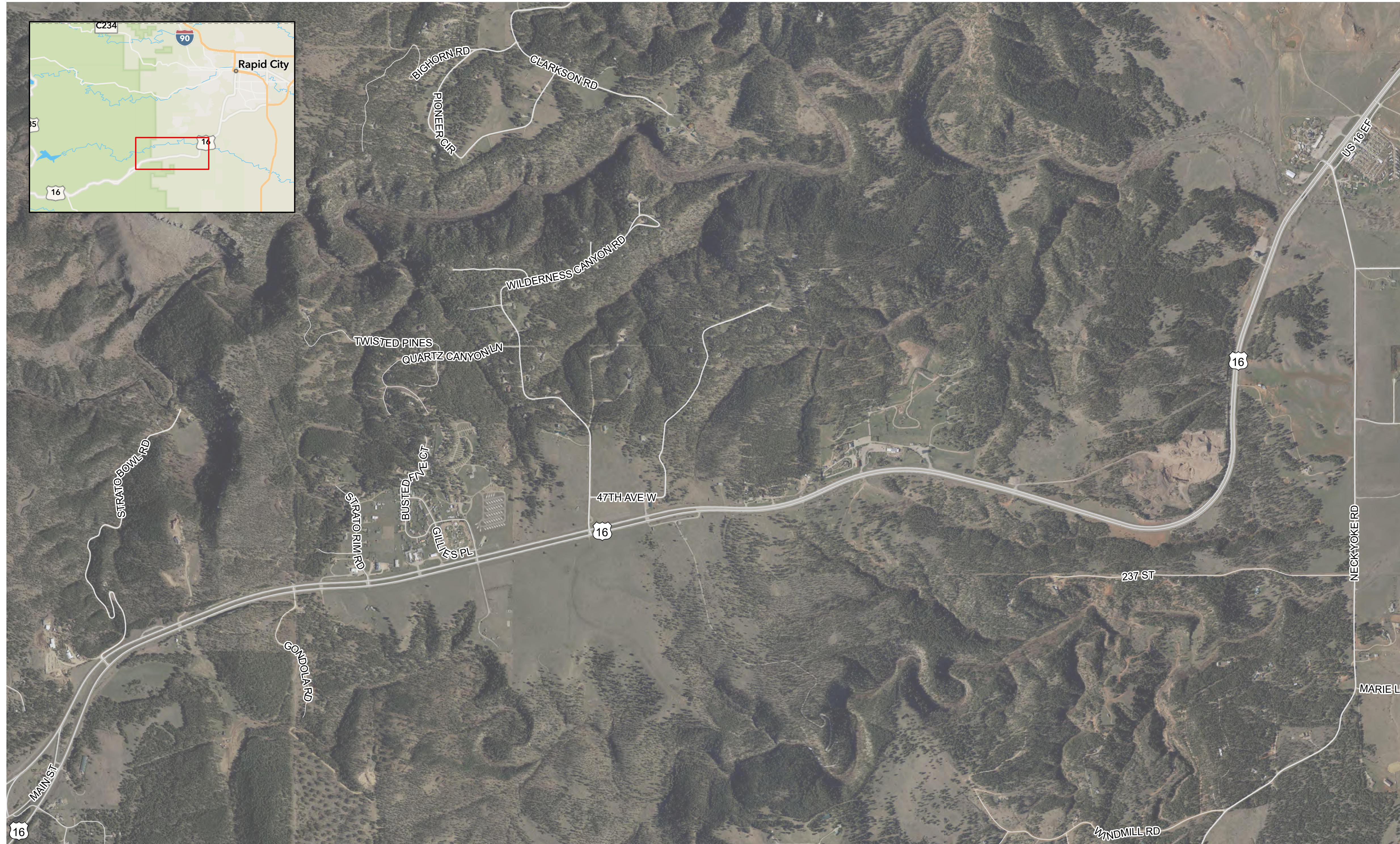
The purpose of the project is to address local and regional trips along the U.S. Highway 16 corridor, reduce traffic congestion from continued growth and urbanization, and improve safety by addressing movements at intersections.

The need for the project is to:

- **Address local and regional trips along the U.S. Highway 16 corridor:** Considering the corridor as a continuous roadway segment creating system connectivity for local and tourism traffic.
- **Reduce traffic congestion from continued growth and urbanization:** Reviewing the need for roadway improvements to accommodate existing and future traffic volumes.
- **Improve safety by addressing movements at intersections:** Realigning movements to reduce angle conflicts and simplify traffic movements.

ENVIRONMENTAL CONSIDERATIONS

U.S. HIGHWAY 16 CORRIDOR STUDY: RURAL SUB-AREA ANALYSIS



U.S. 16 serves local traffic and tourism. U.S. 16 is the primary route into the Black Hills and associated tourist destinations, including Mount Rushmore National Monument and the Black Hills National Forest along with private attractions.

- Archaeological/Historic Resources
- Wetlands and Streams
- Threatened and Endangered Species
- Wildlife
- Section 4(f)- Archeological/Historic Resources
- Noise